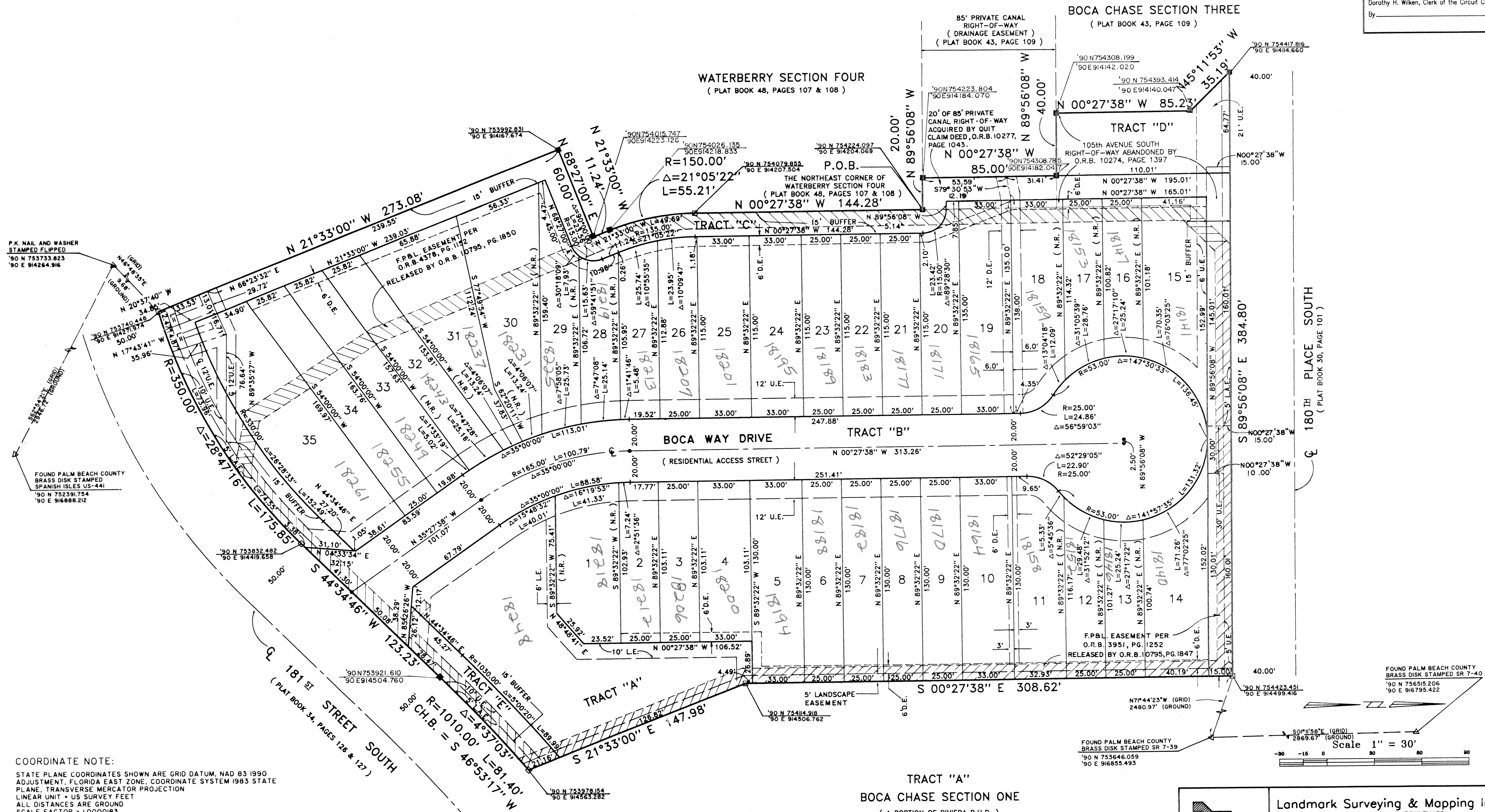


# BOCA CHASE PARCEL "10" ( COCO POINTE I )

A P.U.D.

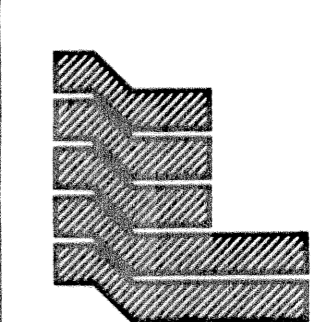
BEING A REPLAT OF A PORTION OF TRACTS 13 AND 14, OF FLORIDA FRUIT LANDS SUBDIVISION NO. 2, AS RECORDED IN PLAT BOOK 1, PAGE 102 AND A PORTION OF BOCA CHASE SECTION THREE, AS RECORDED IN PLAT BOOK 43, PAGE 108 OF THE PUBLIC RECORDS OF PALM BEACH COUNTY, FLORIDA AND LYING IN SECTION 1, TOWNSHIP 47 SOUTH, RANGE 41 EAST, PALM BEACH COUNTY, FLORIDA.  
SHEET 2 OF 2  
APRIL 1998

STATE OF FLORIDA  
COUNTY OF PALM BEACH  
This Plat was filed for record on \_\_\_\_\_  
M. This \_\_\_\_\_ day of \_\_\_\_\_, 19\_\_\_\_  
and duly recorded in Plat Book No. \_\_\_\_\_  
on Page \_\_\_\_\_  
Dorothy H. Wilken, Clerk of the Circuit Court  
By \_\_\_\_\_ D.C.



COORDINATE NOTE:  
STATE PLANE COORDINATES SHOWN ARE GRID DATUM, NAD 83 1990 ADJUSTMENT, FLORIDA EAST ZONE, COORDINATE SYSTEM 1983 STATE PLANE, TRANSVERSE MERCATOR PROJECTION  
LINEAR UNIT - US SURVEY FEET  
ALL DISTANCES ARE GROUND  
SCALE FACTOR = 1.0000183  
GROUND DISTANCE X SCALE FACTOR = GRID DISTANCE  
S 00°27'38" E (PLAT BEARING) -00°54'12" COUNTERCLOCKWISE ROTATION  
S 0°21'50" E (GRID BEARING) PLAT TO GRID  
THE EAST LINE OF LOTS 5 THRU 14 BOCA CHASE PARCEL "10" ( COCO POINT I )

TRACT "A"  
BOCA CHASE SECTION ONE  
( A PORTION OF RIVIERA P.U.D. )  
( PLAT BOOK 34, PAGES 126 & 127 )



Scale 1" = 30'  
-30 -15 0 30 60 90

Landmark Surveying & Mapping Inc.  
1850 FOREST HILL BOULEVARD  
PH. (561)433-5405 SUITE 100 W.P.B. FLORIDA  
**BOCA CHASE PARCEL "10"**  
( COCO POINTE I )

Subdivision: Boca Chase Parcel 10  
Book: 84  
Page: 58  
Flood Zone: 100B  
Zoning: AR  
Area: 72-118  
Tax: 881  
PUD Name: Boca Chase Riviera  
Date: 4-27-98